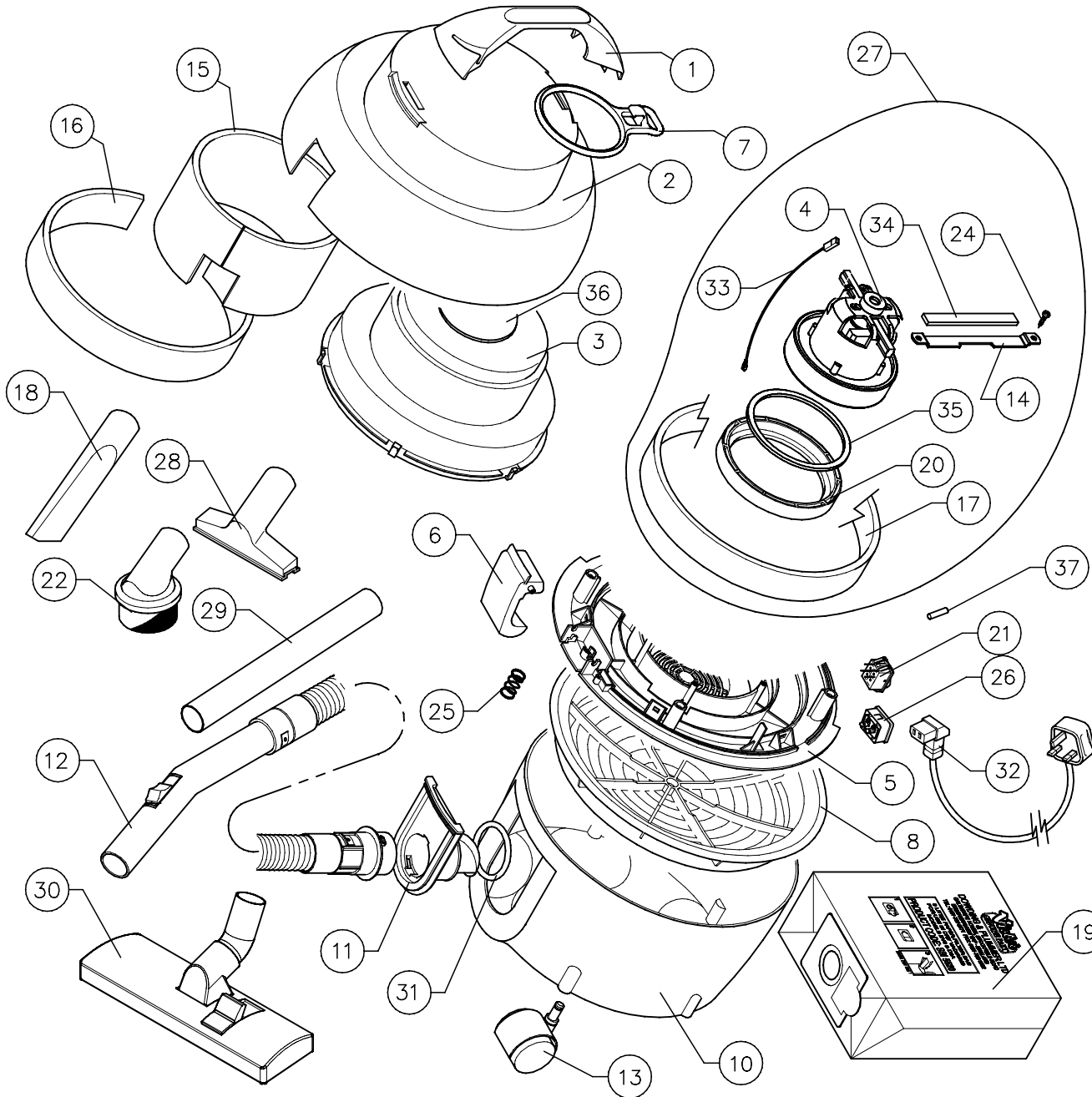




**DOWDING & PLUMMER Ltd.**

CALTHORPE HOUSE, STOCKFIELD ROAD,  
BIRMINGHAM B27 6AP – ENGLAND  
TEL: 0121-706-5771 FAX: 0121-708-1052

[www.victorfloorcare.com](http://www.victorfloorcare.com)



ITEM	PART No.	QTY.	DESCRIPTION
1	C1628/GRY	1	HANDLE
2	C1625/YELLOW	1	OUTER CASING
3	C1626/GRY	1	MOTOR CASING
4	SBI6975	1	900W MOTOR
5	C1627/GRY	1	MOTOR HOUSING
6	C1640/C/BLK	1	CATCH LEVER
7	D0181	1	CABLE RESTRAINT
8	C1842	1	HEPA FILTER FRAME ASSY
9	C1717	1	RATING LABEL
10	C1589/GRY	1	TUB
11	C1596/C/BLK	1	BAG INLET
12	AYH2030	1	2 Mtr HOSE ASSEMBLY
13	C1710	5	CASTOR
14	D0863	2	MOTOR FIXING STRAP
15	C1629	1	ACOUSTIC FOAM
16	C1630	1	OUTER FOAM
17	C1678	1	ACOUSTIC FOAM
18	C1704	1	32mm CREVICE NOZZLE
19	SBI5520	1	9 LITRE PAPER FILTER DUST BAG
20	C1783	1	MOTOR MOUNTING RING
21	C1715	1	ON/OFF ROCKER SWITCH
22	C1705	1	32mm ROUND DUSTING BRUSH
23	C1404	1	CABLE GRIP
24	-	10	SCREW 4 x 25mm SPAX
25	C1711	1	LATCH SPRING
26	D1038	1	V-9 INLET SOCKET
27	D0886	1	VAC MOTOR SPARES KIT
28	C1706	1	32mm CARPET/UPHOLSTERY TOOL
29	C1700	2	Ø32mm x 500mm LONG DOWNTUBE
30	SBI6596	1	32mm COMBINED FLOOR TOOL
31	D0028	1	'O' RING
32	D1084	1	PLUG-IN POWER CORD
33	D0957	2	SWITCH TO VAC MOTOR CABLE
34	D1064/A	2	MOTOR FIXING STRAP GASKET
35	D1064/B	1	MOTOR MOUNTING RING GASKET
36	D1064/C	1	OUTER CASING GASKET
37	D1282	1	DOWLING BLANK

A.G.D. 16/04/2007 PL455-1

WHEN ORDERING PLEASE QUOTE PART No. AND PART DESCRIPTION

2007 **Victor** RANGE

V-9

9Ltr HEPA DRY TUB VAC WITH FULL TOOL SET